



ADVANCED SENSOR INTEGRATIONS

AS1120

Evaluation Board

User Manual

Version 1.0

January 25th 2010



ADVANCED SENSOR INTEGRATIONS

1. Connect the Programmer board to the Demo board as follow. Make sure they are connected correctly.
2. Connect the Programmer board to PC's USB port. Click and accept automatic install driver in Windows.



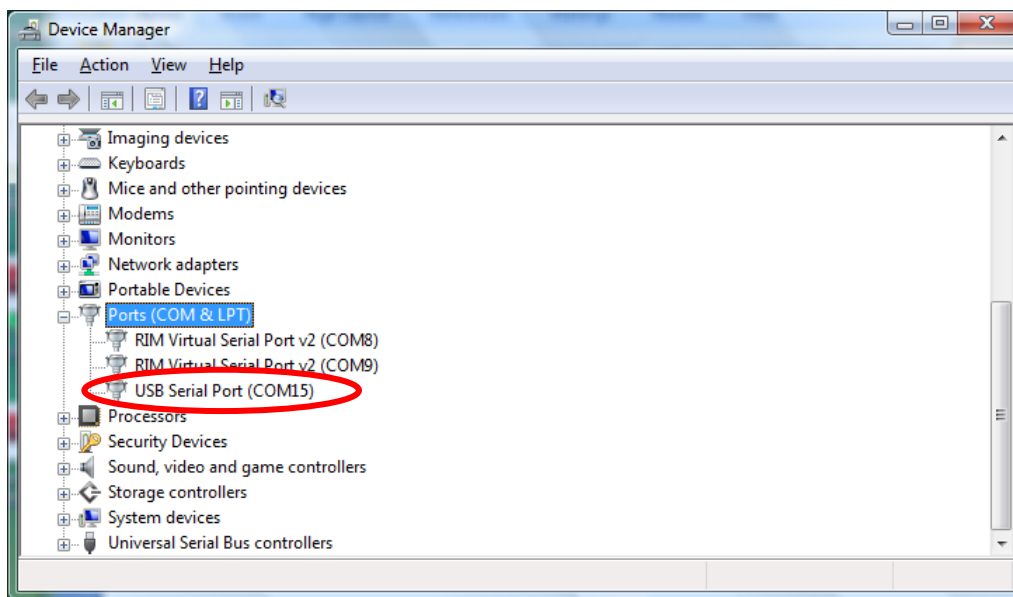


ADVANCED SENSOR INTEGRATIONS

3. Depending on your Windows versions:

For Window Vista: go to Control Panel, go to Device Manager, click on “Ports (COMS&LPT)”.

For Windows XP: go to Control Panel, click Performance and Maintenance, click system, click Hardware Tab, click Device Manager. Take note of the USB Serial Port COM location. In below example, the USB port is COM15:

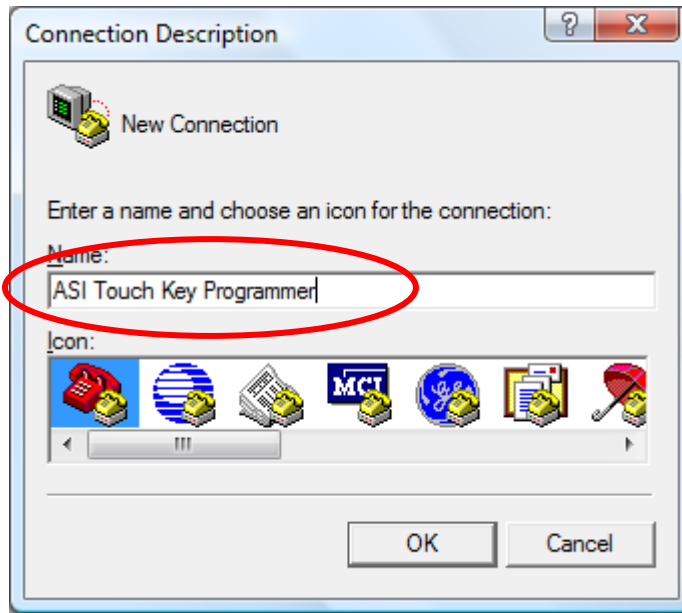




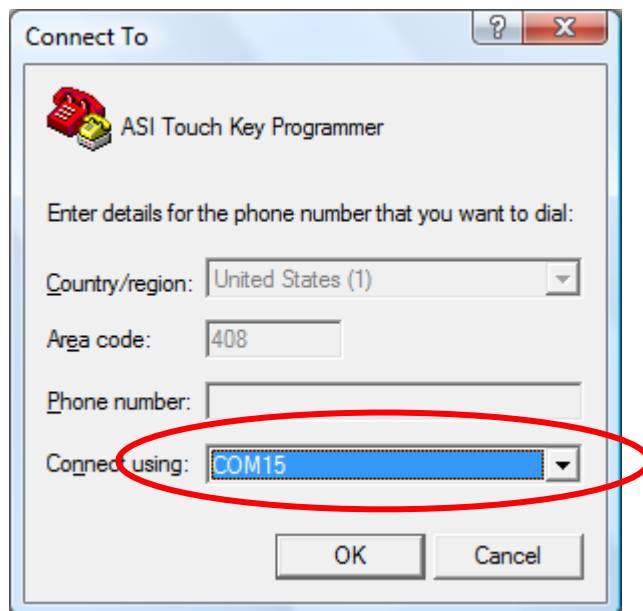
ADVANCED SENSOR INTEGRATIONS

4. In Windows, launch "Hyper Terminal". For Windows XP, it is under All program -> Accessory -> Communication. For Windows Vista, you may need to download it.

Type in a new name, then press OK. See example below:



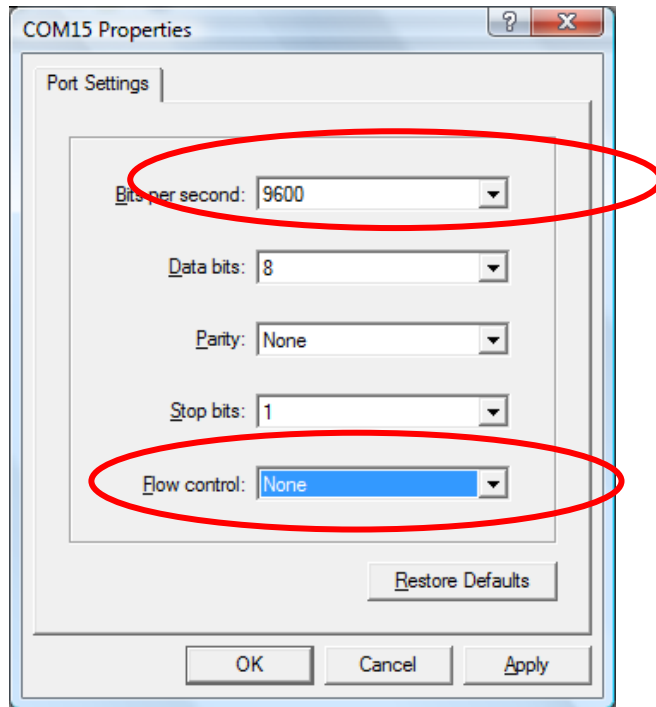
5. A new window "Connect To" will pop up, select the COM port that you noted in Step 3 previous. In this example it was COM15:



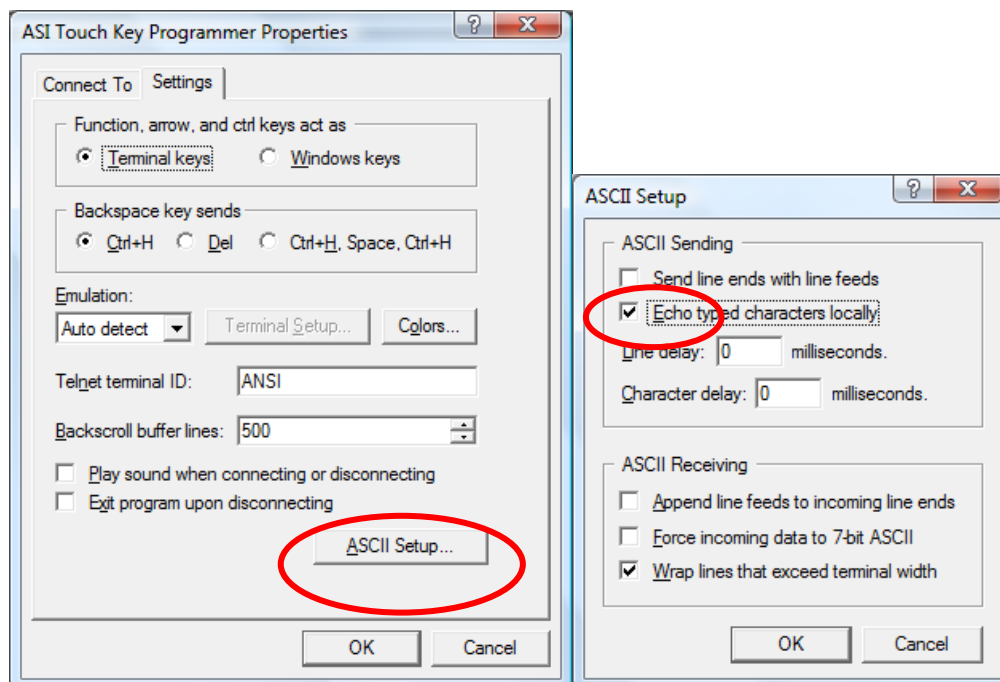


ADVANCED SENSOR INTEGRATIONS

6. Another window will pop up, select “Bits per second” to “9600” and select “Flow Control” to “None”. Example:



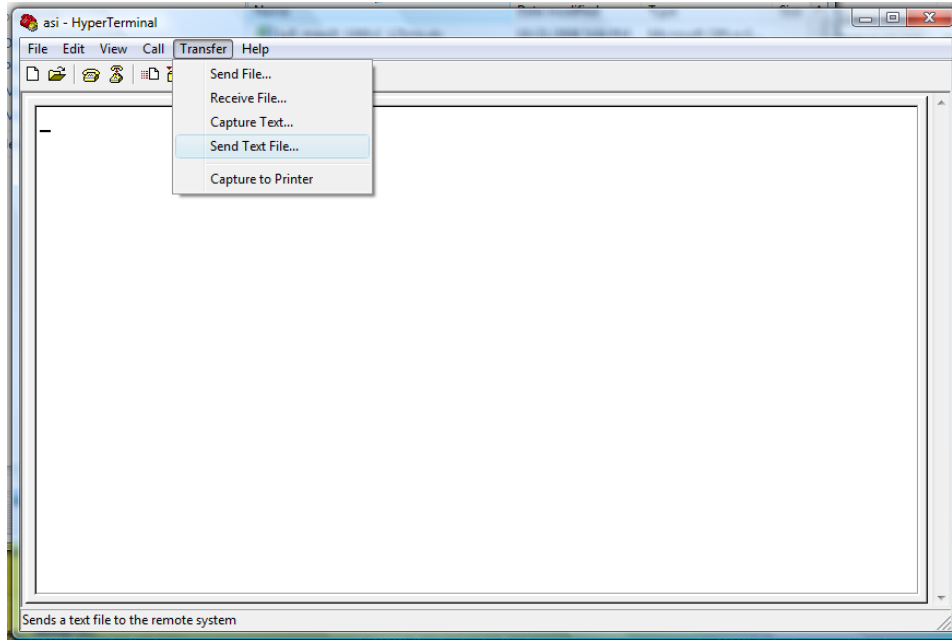
7. In HyprTerminal, click File, click Property. Click Settings Tab, then click ASCII Setup, as follow. Select “Echo typed characters locally”:





ADVANCED SENSOR INTEGRATIONS

8. Click Transfer. Click Send Text File. Select one of the file from “ASI_1120Demo_Toggle”, “ASI_1120Demo_Anti-interference”, ASI_1120Demo_Proximity”, “ASI_1120Demo_Default”, etc. Wait a few seconds after for automatic self calibration. Ready to test now.



ASI Development Team, Corporate Headquarter

3945 Freedom Circle, Suite 710,
Santa Clara, CA 95054, United States

www.advsensor.com

contact@advsensor.com