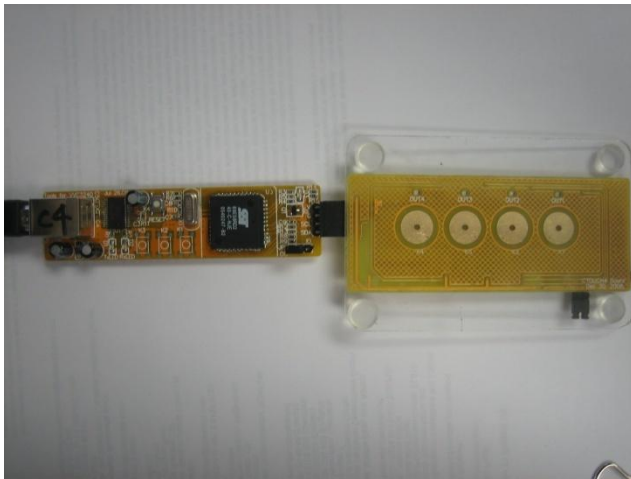


ASI C4 Programmer Board User Manual

Version 1.0

April 1st 2009

1. Connect the Programmer board to the Demo board as follow. Make sure they are connected correctly.



Correct!



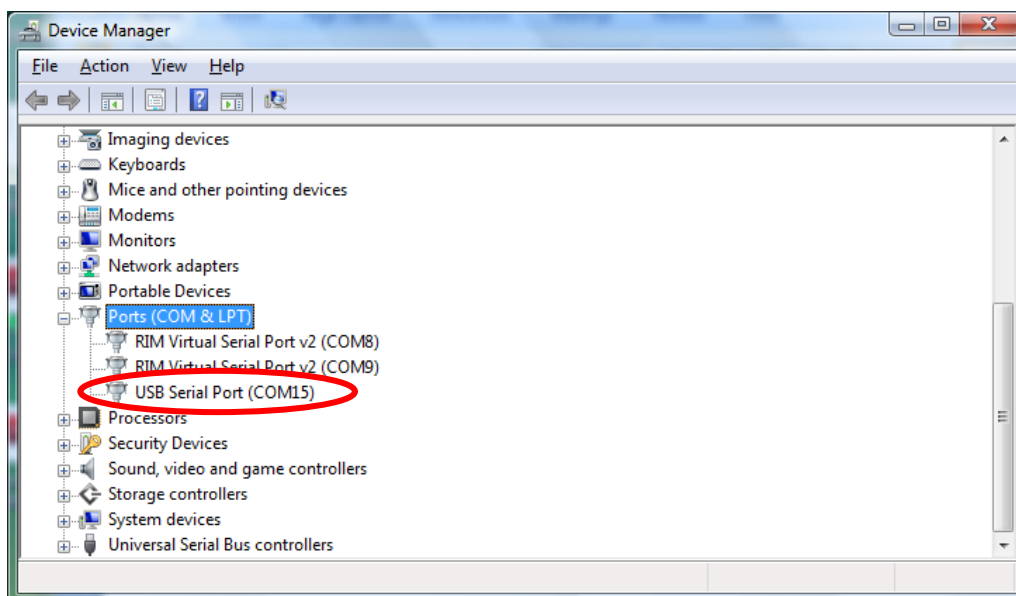
Wrong!!!

2. Connect the Programmer board to PC's USB port. Click and accept automatic install driver in Windows.

3. Depending on your Windows versions:

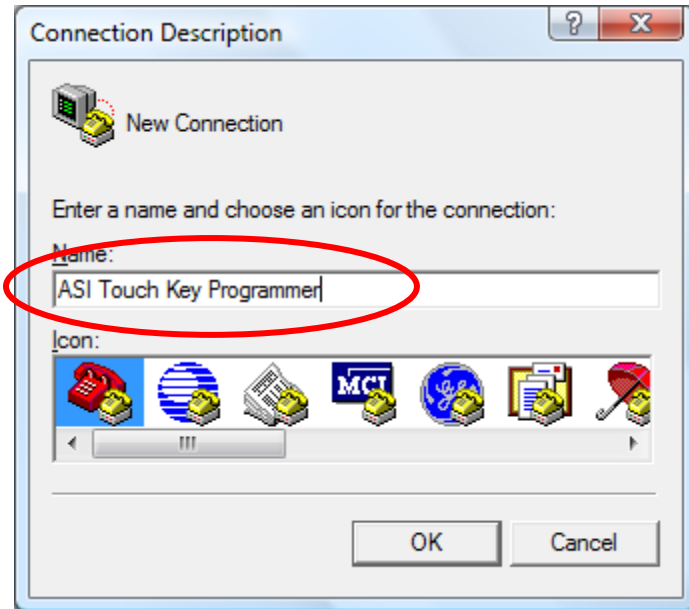
For Window Vista: go to Control Panel, go to Device Manager, click on "Ports (COMS&LPT)".

For Windows XP: go to Control Panel, click Performance and Maintenance, click system, click Hardware Tab, click Device Manager. Take note of the USB Serial Port COM location. In below example, the USB port is COM15:

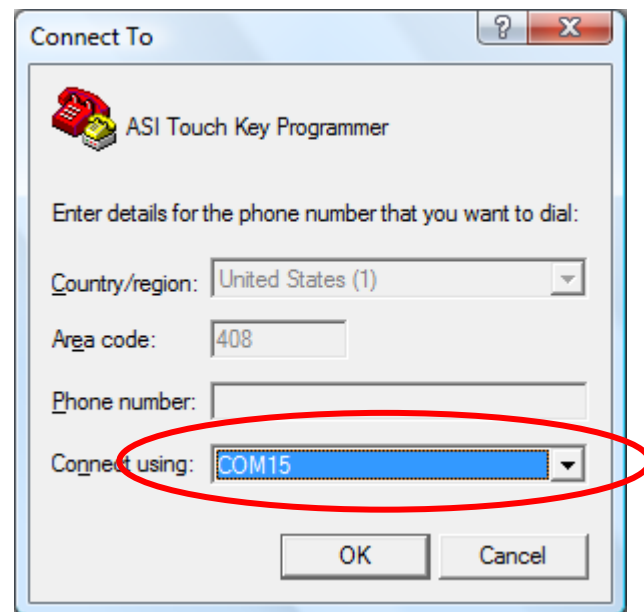


4. In Windows, launch "Hyper Terminal". For Windows XP, it is under All program -> Accessory -> Communication. For Windows Vista, you may need to download it.

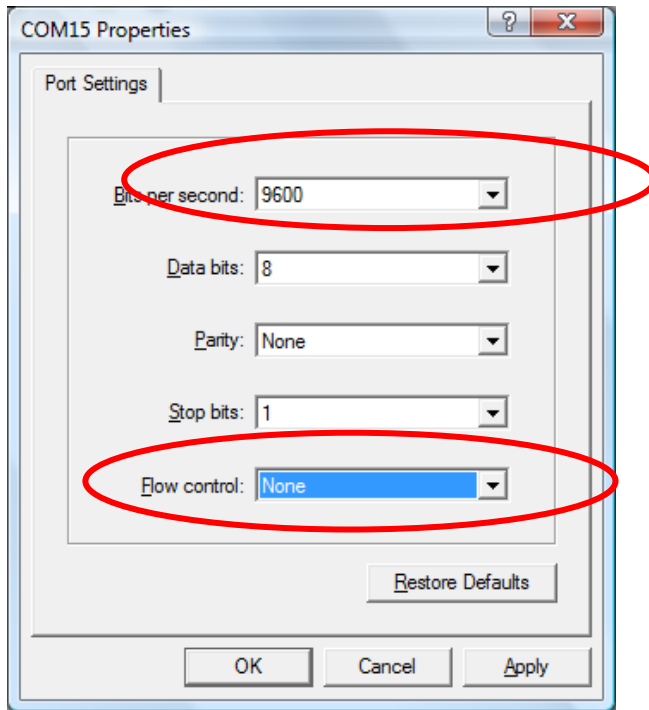
Type in a new name, then press OK. See example below:



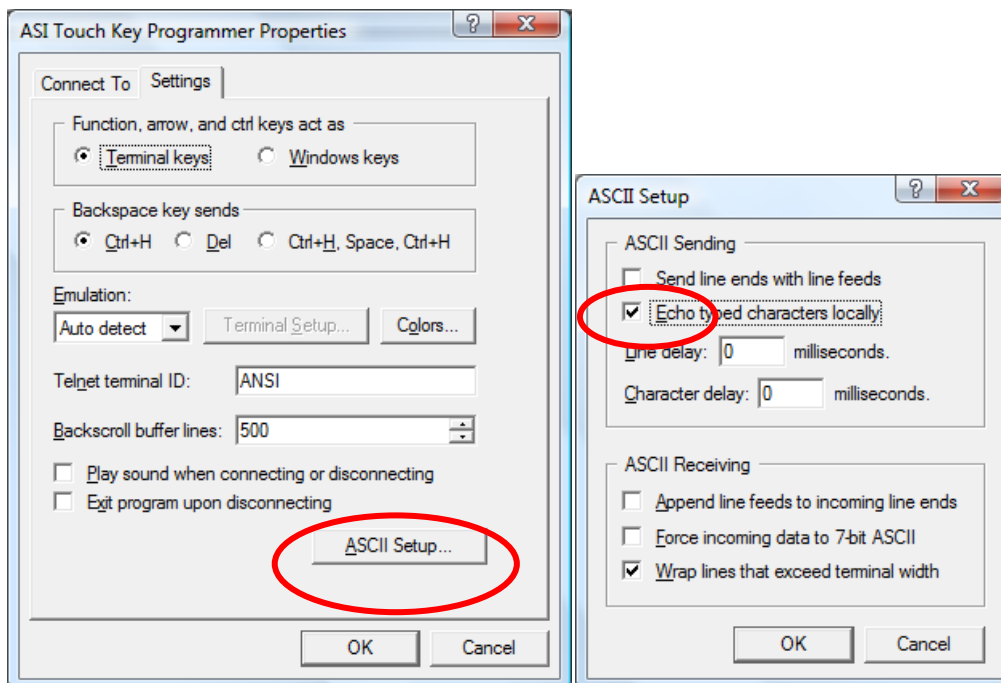
5. A new window "Connect To" will pop up, select the COM port that you noted in Step 3 previous. In this example it was COM15:



6. Another window will pop up, select “Bits per second” to “9600” and select “Flow Control” to “None”.
Example:



7. In HyprTerminal, click File, click Property. Click Settings Tab, then click ASCII Setup, as follow. Select “Echo typed characters locally”:



8. Click Transfer. Click Send Text File. Select one of the file from “ASI_C4Demo_Default”, “ASI_C4Demo_Fast”, “ASI_C4Demo_Safe”, etc. Wait about 5 seconds after for automatic self calibration. Ready to test now.

